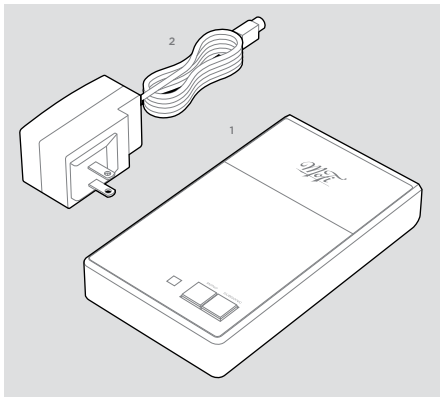


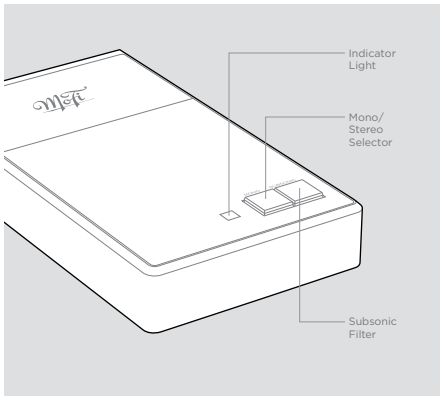
Mofi

ELECTRONICS

IN THE BOX

1. StudioPhono™ Phono Preamp
2. Universal Power Supply





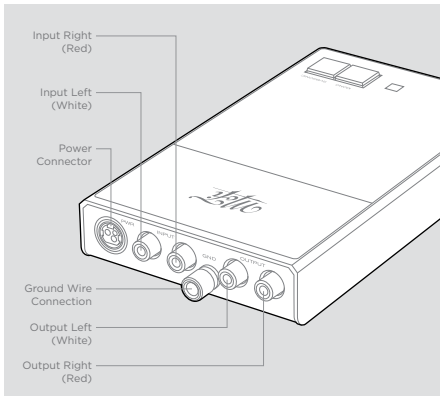
INSTALLATION

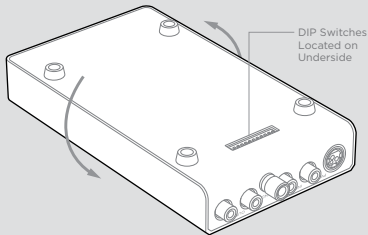
ⓘ Check all connections before you plug in the power supply

StudioPhono™ will operate at its best when properly installed in a location that's free from magnetic fields like those generated by equipment with power transformers (such as an amplifier), and within a reasonable distance between your turntable and audio component(s).

Once you've placed StudioPhono™ in a suitable area, connect your turntable's interconnects and ground wire (if supplied) to the phono preamp's inputs, matching each connector to the inputs as shown. Attach another set of interconnects from the phono preamp's outputs to the line-level analog inputs of your preamplifier/processor.

Plug in the provided power supply between the phono preamp's power input and a wall outlet or line conditioner.





CARTRIDGE LOADING

StudioPhono™ has been engineered to work with a wide array of phono cartridges on the market today. Because phono cartridges require special impedance and gain settings, you should configure StudioPhono™ to suit the cartridge of your choice.

Out of the box, StudioPhono™ is factory set to operate with most high-output Moving Magnet (MM), Moving Coil (MC), or Moving Iron (MI) phono cartridges. If you are using a low-output Moving Coil (MC) cartridge, you will need to adjust the phono preamplifier's settings for best results.

Locate the DIP switches, which are found on the underside. Each switch is arranged in a mirror pattern for left and right channels.

Start by selecting each DIP switch for the recommended impedance of your cartridge as shown in the *Input Impedance Settings* chart.

Next, select the best gain setting for your cartridge using the *Cartridge Output Settings* chart and set DIP switches accordingly.

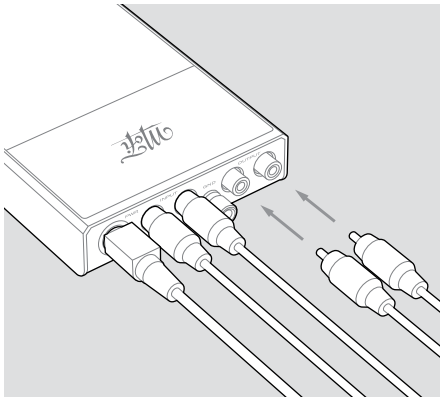
For Moving Magnet (MM), start with 40dB. For Moving Coil (MC), start with 60dB. An additional 6dB can be added via DIP switches 1 and 12.

Input Impedance Settings

| DIP Switch No. | 3 , 10 | 4, 9 | 5, 8 | 6, 7 |
|----------------|--------|------|------|------|
| 100 Ohms | On | Off | Off | Off |
| 500 Ohms | Off | On | Off | Off |
| 1000 Ohms | Off | Off | Off | On |
| 47000 Ohms | Off | Off | Off | Off |

Cartridge Output Settings

| DIP Switch No. | 2 , 11 | 1, 12 |
|-----------------------|--------|-------|
| > 3mV / 40dB Gain | Off | Off |
| 1mv-3mV / 46dB Gain | Off | On |
| 0.3mV-1mV / 60dB Gain | On | Off |



OPERATION

Once you have connected cables between StudioPhono™ and your turntable and amplifier/preamplifier, and completed the setup of your impedance and gain settings, plug in the power supply.

! When playing a mono record, depress the Mono button

! To control low frequencies below 20Hz, depress the Subsonic button

| | StudioPhono™ | UltraPhono™ |
|----------------------------|---------------------------------|------------------------------------|
| Gain | Adjustable from 40dB - 66dB | Adjustable from 40dB - 66dB |
| THD | < .01% (MM) / < .012% (MC) | < .006% (MM) / < .055% (MC) |
| Load Impedance (MM) | 47,000 Ohms | 47,000 Ohms |
| Load Impedance (MC) | 75, 100, 500, 1k, 10k, 47k Ohms | 75, 100, 500, 1k, 10k, 47k Ohms |
| Headphone Amplifier | | |
| Headphone Output | - | 8V RMS Max, 62 Ohms, 1.5 w/ch |
| Volume Control | - | 31 steps, 2dB per/step, 62dB range |
| Mute Switch | - | -90dB |
| Minimum Impedance | - | > 10 Ohms |

MoFi ELECTRONICS

www.mofielectronics.com

MoFi Electronics - 1811 W Bryn Mawr Ave Chicago IL